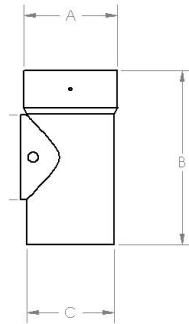


S.S CLIPSNOUTEE



Use to attach to SS liner with a fast spin and lock snout.

5.5" Tee has a 6" snout.

3" & 4" Standard snout size = 8"

5" to 16" = 14"

ClipsnouTee 3"-8" in 304 26 gauge.

9"-16" in 304 24 gauge.

Ashtray/Tee Cap included.

ClipsnouTee also available in 316 upon request.

For special snout lengths including pricing, please call for info.

DIAMETER	CODE	A	B	C
3"	BT03COM	3 3/8"	7"	3"
4"	BT04COM	4 3/8"	8"	4"
5"	BT05COM	5 3/8"	9"	5"
5.5"	BT05.5COM	5 7/8"	9"	5"
6" DD	BT06COM	6 1/4"	10"	5.5"
6" REG	BT06RCOM	6 3/8"	10"	6"
7"	BT07COM	7 3/8"	11"	7"
8"	BT08COM	8 3/8"	12"	8"
9"	BT09COM	9 3/8"	13"	9"
10"	BT10COM	10 3/8"	14"	10"
12"	BT12COM	12 3/8"	16"	12"
14"	BT14COM	14 3/8"	18"	14"
16"	BT16COM	16 3/8"	20"	16"